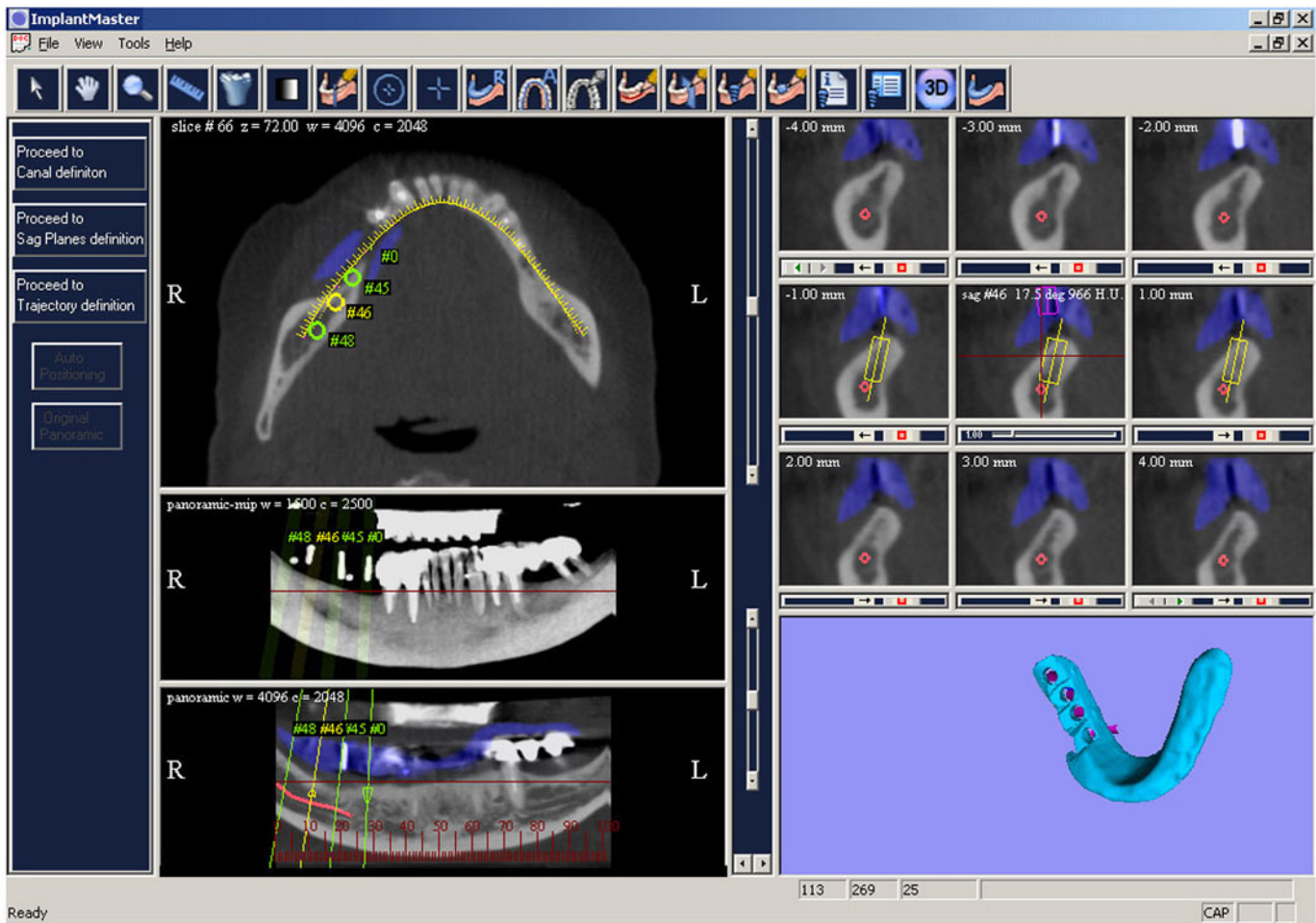


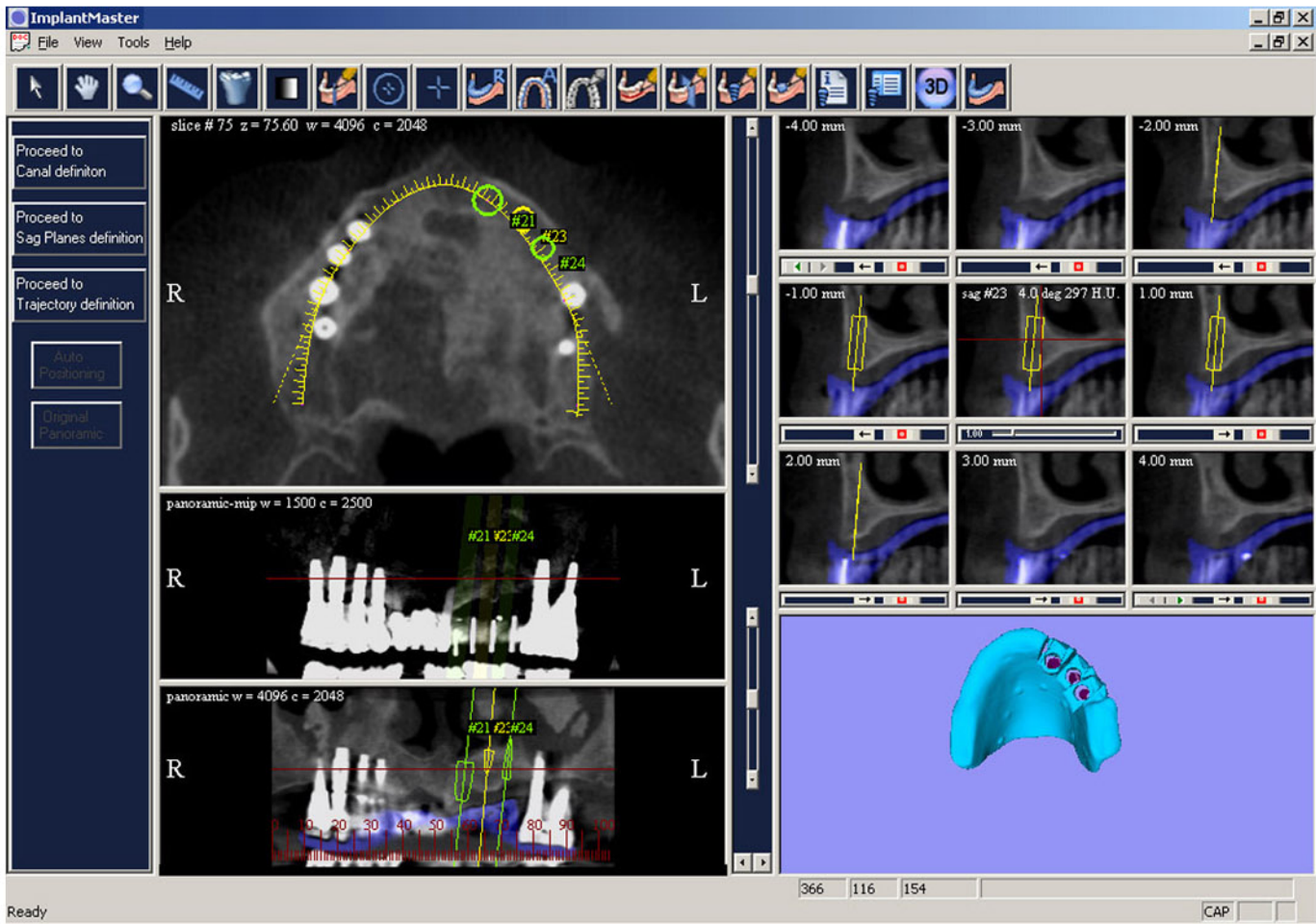
Planned cases with ImplantMaster.

After the planning the surgical guide can be seen in 3D on the lower right of the screen. The image can be enlarged and viewed from any angle. The direction of each trajectory and its relation to a vital structure such as the mandibular canal is easily seen. The planning can be changed and a new 3D image produced at any time. This image is the exact shape of the surgical guide to be manufactured automatically.

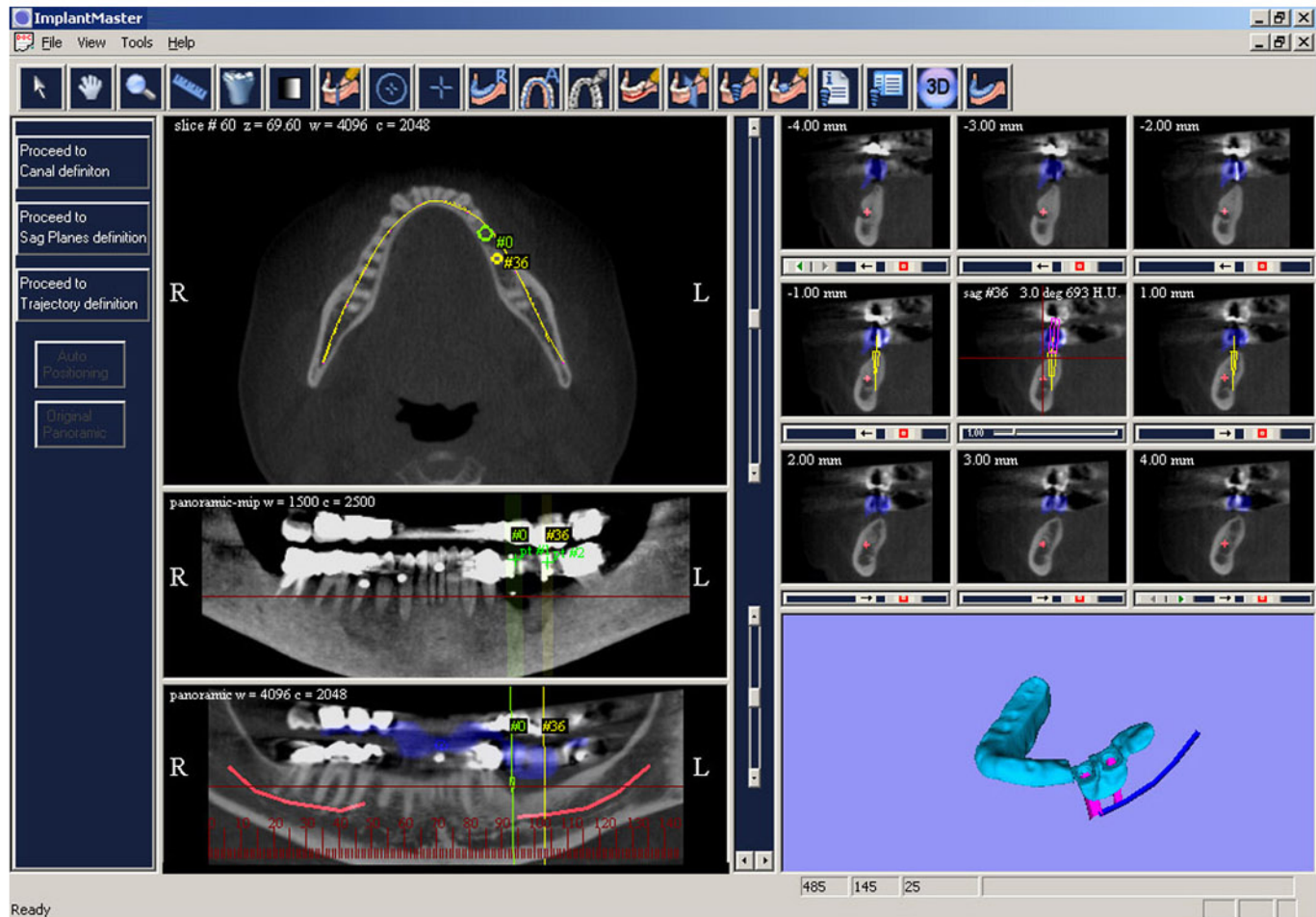
4 implants in the lower right mandible- free-end.



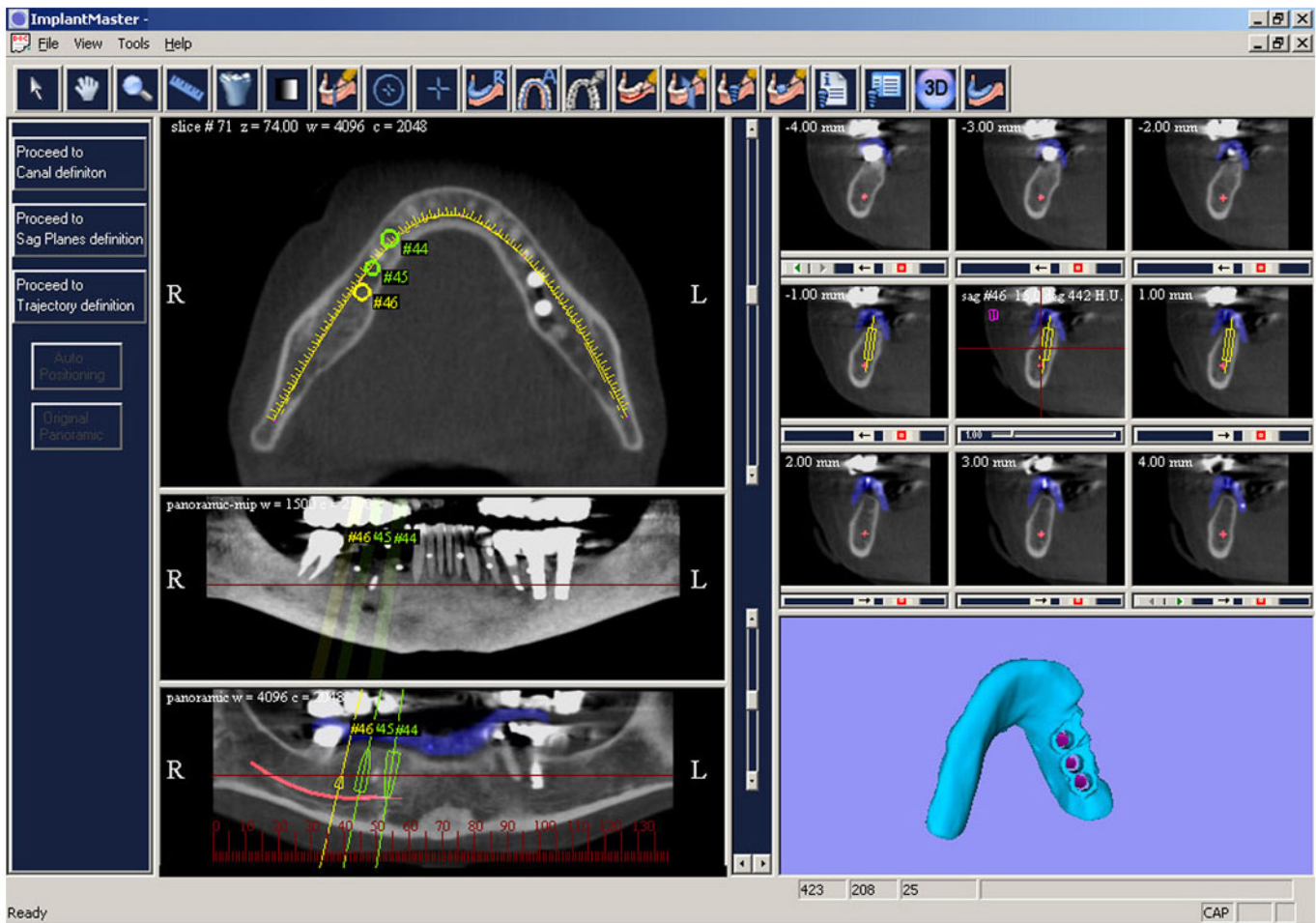
3 implants in the upper left maxilla. Bone augmentation was avoided by using all the available bone.



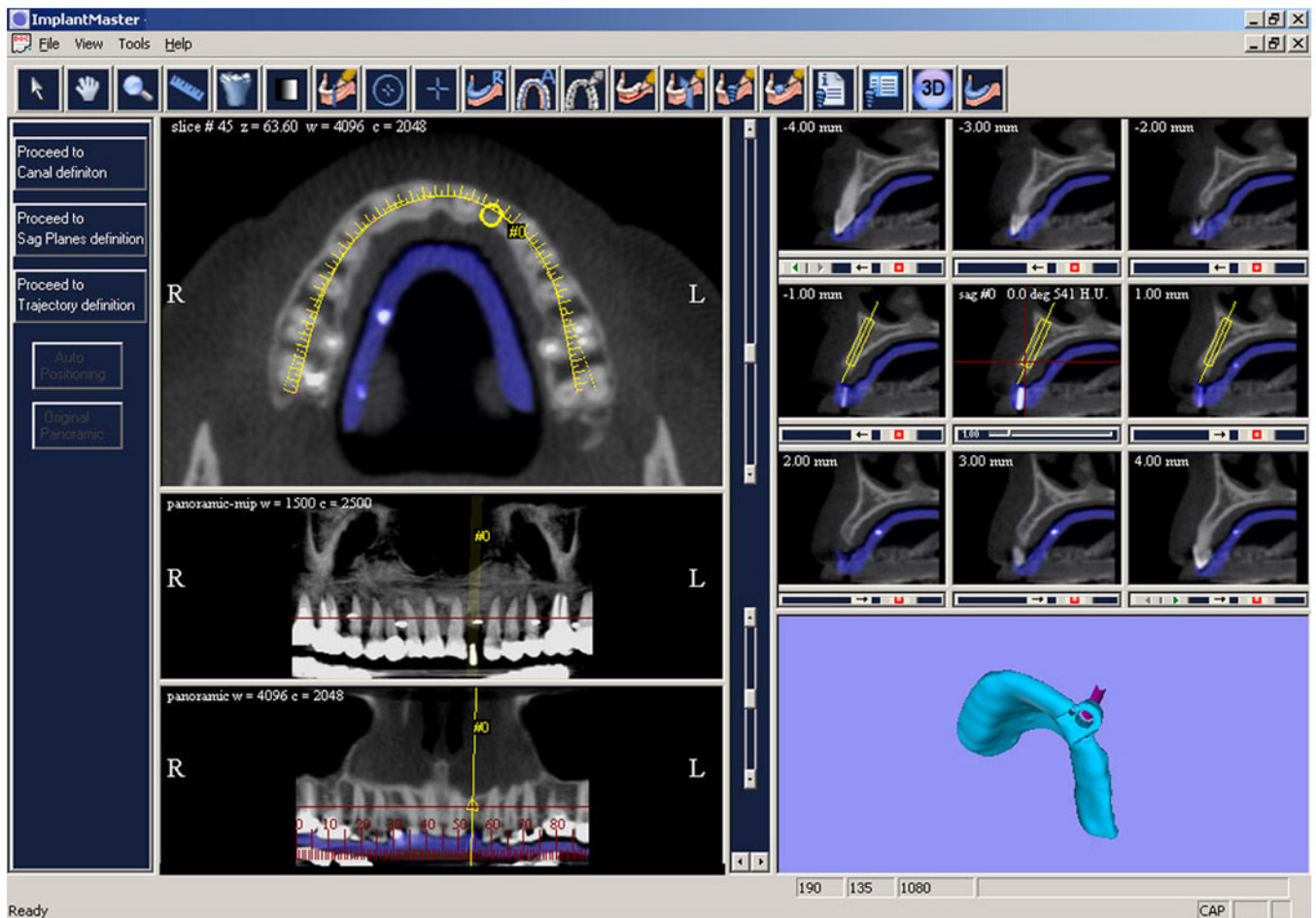
2 implants in the lower left mandible.



3 implants in the lower right mandible. A retained root was left in place between the 2 anterior implants, to avoid the bone loss involved in removing it. The implants were placed on either side.



A single implant to replace the upper left lateral incisor. With the help of planning and a surgical guide a long implant was placed using the available bone, and without harming the adjacent roots.



5 implants in the lower right mandible. The ridge was severely resorbed, and the second most anterior implant was placed lingual to the canal. A small trajectory was planned in the posterior area for a fixation screw to ensure stability of the guide.

